

AUX

C-SERIES

SEER20/22/25

AUX



AUX USA WEBSITE

www.auxair.com/us



SOFT

Cold air blows through up to 3206 Micro Vents preventing drafts while still cooling the space (24K).

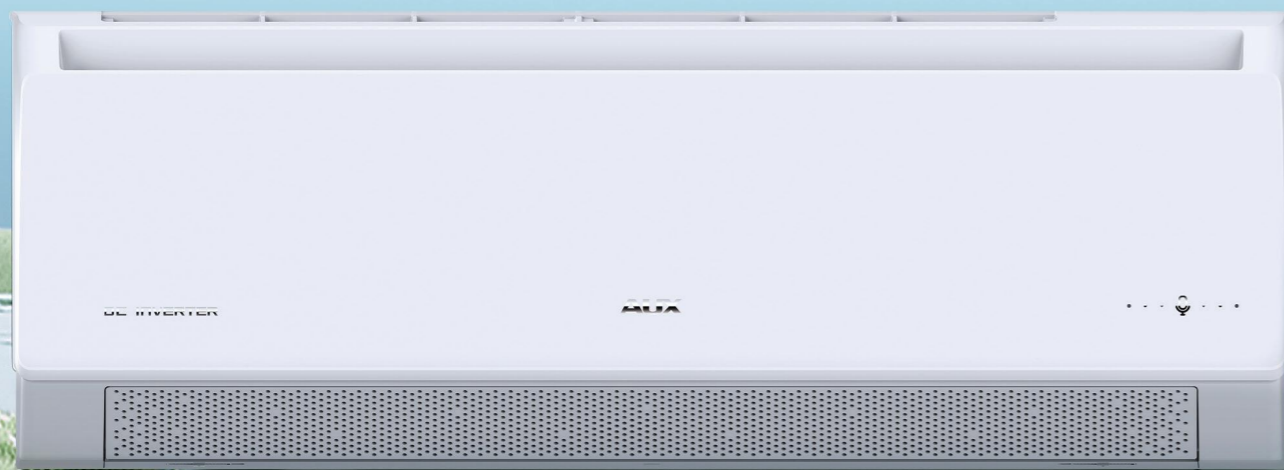
Micro vents: 1729 (09K) 1935 (12K) 2921 (18K)
Besides seer20 36K/seer25 24K



*Patent No.: 202121995992.8/ 202322368367.6

ECO ENERGY-SAVING

Adjusting frequency according to the temperature difference at cooling mode, saving power and energy.



OFFLINE VOICE CONTROL

Say a word and get it done easily, no fear of disconnection, no need to find the remote control, equipped with high-performance offline voice module, which can realize multi-round conversations.



I'm here

seer22/25
Besides seer25 24K

Hello, Lisa

WIFI

Intelligent remote control, convenient operation.



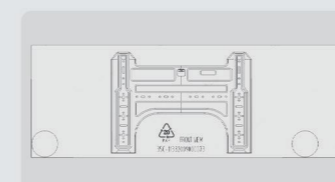
EASY INSTALLATION

Installation guide diagram and built-in level help quickly locate the installation position, detachable underjaw and plate support design provide more operating space to pipe connections.

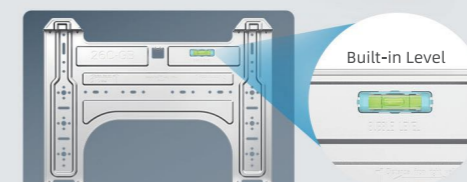


4) Plate Support

3) Detachable Underjaw
Besides seer20 36K/seer25 24K



1) Installation Guide Diagram

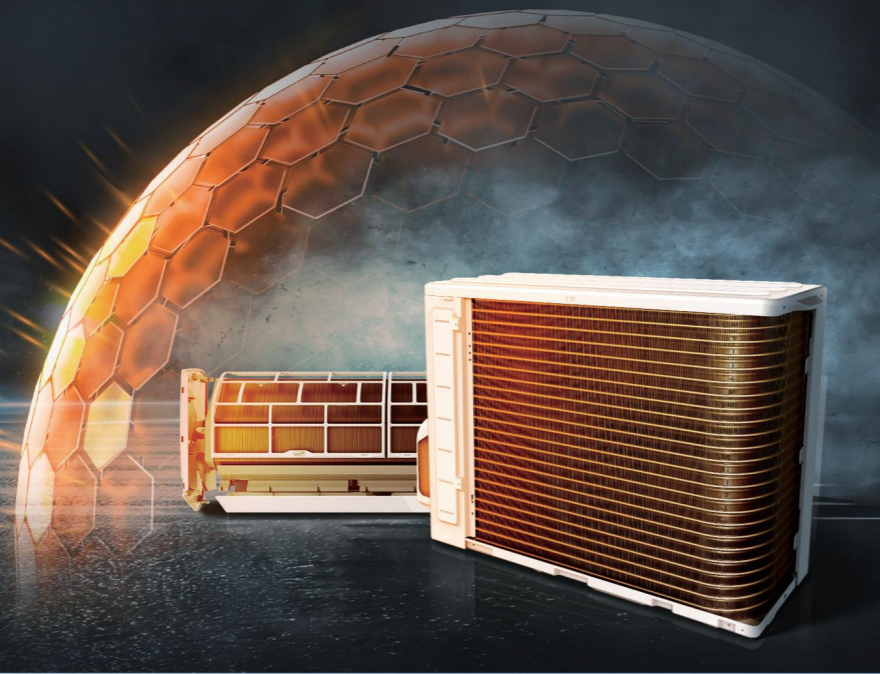


2) Installation Plate



GOLDEN FIN

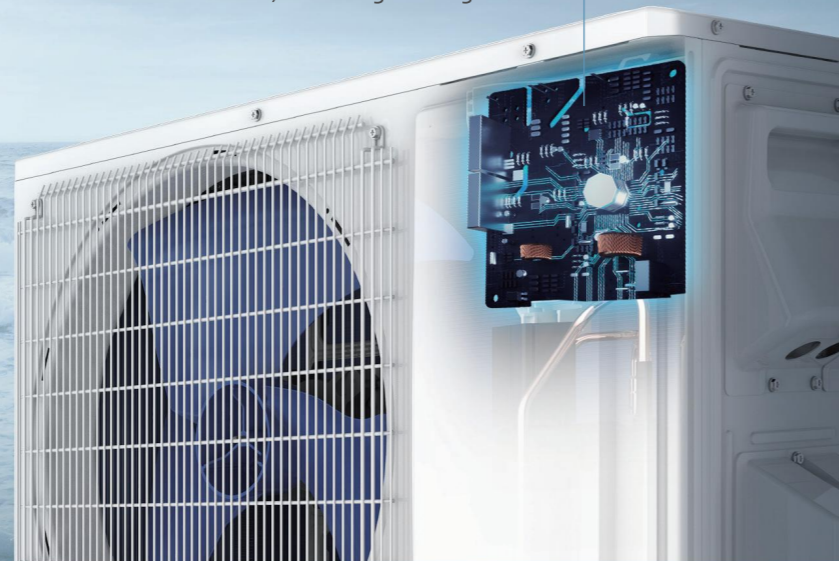
Golden fin is more resistant to oxidation and corrosion than ordinary blue fins of most condensers. It also prevents bacteria from breeding and is able to enhance heat efficiency.



THREE-PROOFING OF OUTDOOR UNIT PCB

UV adhesive cover to achieve anti-corrosion, lower failure rate, improve air conditioning service life.

Vertical placement prevents deposition or deformation, reducing damage rates.



BASE PAN HEATING

Better adapted to low-temperature environments, preventing the chassis from freezing and improving the heating effect.



FEATURES

- Micro Vent (Besides seer20 36K)
- ECO
- Auto Cleaning
- Easy Maintain
- Base Pan Heater
- Easy Installation

APPEARANCE



| SEER20 | | Specification Sheet | | | | | | | | |
|--|---------------------------------|--------------------------|-----------------|---------------------|---------------------|---------------------|---------------------|---------------------|---------------------|-------------------|
| | | CA | | | | | | LC | | |
| | | 115V, 1ph, 60Hz | | 208/230V, 1ph, 60Hz | | | | 208/230V, 1ph, 60Hz | | |
| Model | | AJAN09HP115V1C | AJAN12HP115V1C | AJAN09HP230V1C | AJAN12HP230V1C | AJAN18HP230V1C | AJAN24HP230V1C | AJAN36HP230V1C | | |
| Indoor Unit | | AJAN09HP115V1CH | AJAN12HP115V1CH | AJAN09HP230V1CH | AJAN12HP230V1CH | AJAN18HP230V1CH | AJAN24HP230V1CH | AJAN36HP230V1CH | | |
| Outdoor Unit | | AJAN09HP115V1CO | AJAN12HP115V1CO | AJAN09HP230V1CO | AJAN12HP230V1CO | AJAN18HP230V1CO | AJAN24HP230V1CO | AJAN36HP230V1CO | | |
| AHRI Certified Reference Number | | 214290025 | 214290026 | 214290013 | 214290031 | 214290028 | 214290029 | 214290030 | | |
| Cooling | Capacity | Rated | Btu/h | 9100 | 12000 | 9100 | 12000 | 18000 | 24000 | 33600 |
| | Capacity Range | Min-Max | Btu/h | 1700~12000 | 1700~13300 | 1700~12600 | 1700~13300 | 2900~20000 | 4300~25200 | 7500~35500 |
| | Power Input | Rated | W | 800 | 1250 | 758 | 1212 | 1638 | 2020 | 3320 |
| | Moisture Removal | | Kg/h | 0.7 | 1 | 0.7 | 1 | 1.6 | 2.6 | 3.6 |
| Heating | Capacity at 47 °F | Rated | Btu/h | 9500 | 12300 | 10000 | 12300 | 19100 | 24000 | 34000 |
| | Capacity Range | Min-Max | Btu/h | 1700~14000 | 1700~15000 | 1700~14000 | 1700~15000 | 4400~22600 | 5300~27300 | 8300~42000 |
| | Power Input at 47 °F | Rated | W | 800 | 1050 | 790 | 1,030 | 1,695 | 2070 | 3000 |
| | Capacity at 17 °F | Rated | Btu/h | 9400 | 9800 | 9400 | 9800 | 15500 | 20800 | 24400 |
| | Capacity at 5 °F | Max | Btu/h | 9000 | 9200 | 9200 | 9200 | 14200 | 20000 | 23800 |
| Efficiency | SEER2 | | | 20 | 20 | 22 | 21 | 20 | 20 | 20 |
| | HSPF2 | | | 8.5 | 8.5 | 9.2 | 8.8 | 9 | 9 | 8.5 |
| Indoor Unit | COP | | W/W | 3.48 | 3.43 | 3.7 | 3.5 | 3.3 | 3.4 | 3.3 |
| | EER2 | | Btu/h/W | 11.4 | 9.6 | 12.0 | 9.9 | 11.0 | 11.9 | 10.1 |
| | MCA | | A | 15 | 15 | 10 | 10 | 15 | 15 | 20 |
| | MOCP | | A | 25 | 25 | 15 | 15 | 20 | 25 | 35 |
| Outdoor Unit | Air Flow Rate (SH/H/M/L/Q) | CFM | | 355/315/282/255/180 | 380/330/302/273/193 | 355/315/282/255/180 | 380/330/302/273/193 | 560/496/437/378/252 | 735/652/574/497/331 | 940/833/742/636/- |
| | Sound Pressure Level | Cooling | dB(A) | 41/36/34/31/26 | 43/40/36/33/27 | 41/36/34/31/26 | 43/40/36/33/27 | 49/46/42/37/29 | 50/48/44/39/33 | 51/48/44/39/34 |
| | | Heating | dB(A) | 41/36/33/29/- | 43/40/36/33/- | 41/36/33/29/- | 43/40/36/33/- | 49/46/42/37/- | 49/47/43/38/- | 50/48/43/39/- |
| Outdoor Unit | External Static Pressure | In.W.G. | | 0 | 0 | 0 | 0 | 0 | 0 | 0 |
| | Air Flow Rate (Cooling/Heating) | CFM | | 1170 | 1170 | 1170 | 1170 | 1650 | 2000 | 2000 |
| Piping | Diameter | Gas(O.D.) | In.[mm] | 3/8[9.52] | 3/8[9.52] | 3/8[9.52] | 3/8[9.52] | 1/2[12.7] | 5/8[15.88] | 5/8[15.88] |
| | | Liquid(O.D) | In.[mm] | 1/4[6.35] | 1/4[6.35] | 1/4[6.35] | 1/4[6.35] | 1/4[6.35] | 1/4[6.35] | 1/4[6.35] |
| Electrical | Indoor Drain | In.[mm] | | 5/8[15.88] | 5/8[15.88] | 5/8[15.88] | 5/8[15.88] | 5/8[15.88] | 5/8[15.88] | 5/8[15.88] |
| | | Max.Length | ft[m] | | 65 [20] | 65 [20] | 65 [20] | 65 [20] | 100 [30] | 100 [30] |
| | | Max.Height | ft[m] | | 50 [15] | 50 [15] | 50 [15] | 50 [15] | 65 [20] | 65 [20] |
| Electrical | Outdoor-Indoor | V,ph,Hz | | 115,1,60 | 115,1,60 | 208/230,1,60 | 208/230,1,60 | 208/230,1,60 | 208/230,1,60 | 208/230,1,60 |
| | | Recommended Breaker Size | A | | 25 | 25 | 15 | 15 | 20 | 25 |
| Refrigerant Type | | | | R32 | R32 | R32 | R32 | R32 | R32 | R32 |
| Guaranteed Temperature Operation Range | Cooling | °F DB [°C DB] | | 5-125 | 5-125 | 5-125 | 5-125 | 5-125 | 5-125 | 5-125 |
| | | | | (-15-52) | (-15-52) | (-15-52) | (-15-52) | (-15-52) | (-15-52) | (-15-52) |
| Guaranteed Temperature Operation Range | Heating | °F DB [°C DB] | | -13-75 | -13-75 | -13-75 | -13-75 | -13-75 | -13-75 | -13-75 |
| | | | | (-25-24) | (-25-24) | (-25-24) | (-25-24) | (-25-24) | (-25-24) | (-25-24) |

FEATURES

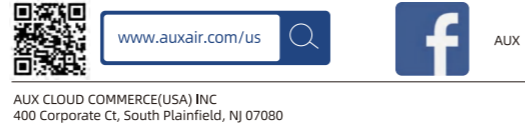


APPEARANCE



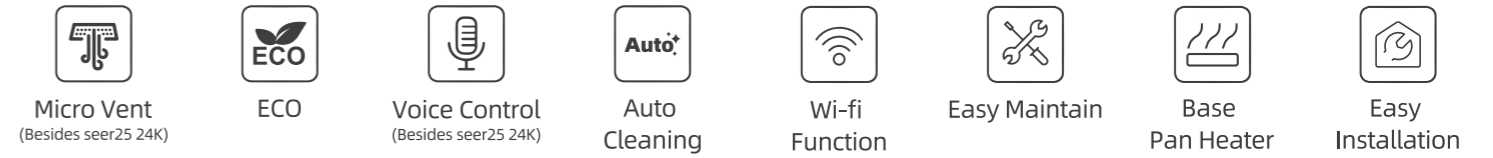
| SEER22 | | | | Specification Sheet | | | | | | | | |
|--|---------------------------------|---------------|---------|---------------------|---------------------|---------------------|---------------------|---------------------|---------------------|--|--|--|
| | | | | 115V,1ph,60Hz | | | 208/230V,1ph,60Hz | | | | | |
| Model | | | | AFEB09HP115V1C | AFEB12HP115V1C | AFEB09HP230V1C | AFEB12HP230V1C | AFEB18HP230V2C | AFEB24HP230V1C | | | |
| Indoor Unit | | | | AFEB09HP115V1CH | AFEB12HP115V1CH | AFEB09HP230V1CH | AFEB12HP230V1CH | AFEB18HP230V2CH | AFEB24HP230V1CH | | | |
| Outdoor Unit | | | | AFEB09HP115V1CO | AFEB12HP115V1CO | AFEB09HP230V1CO | AFEB12HP230V1CO | AFEB18HP230V2CO | AFEB24HP230V1CO | | | |
| AHRI Certified Reference Number | | | | 214290017 | 214290019 | 214290014 | 214290020 | 214311531 | 214290023 | | | |
| Cooling | Capacity | Rated | Btu/h | 9100 | 12000 | 9100 | 12000 | 18000 | 23000 | | | |
| | Capacity Range | Min-Max | Btu/h | 1700-12000 | 1700-13300 | 1700-12600 | 1700-13300 | 2900-20000 | 4300-28000 | | | |
| | Power Input | Rated | W | 700 | 1050 | 700 | 1016 | 1565 | 1910 | | | |
| | Moisture Removal | Kg/h | | 0.7 | 1 | 0.7 | 1 | 1.6 | 2.6 | | | |
| Heating | Capacity at 47 °F | Rated | Btu/h | 9700 | 12300 | 10000 | 12300 | 18000 | 24000 | | | |
| | Capacity Range | Min-Max | Btu/h | 1700-15000 | 1700-15500 | 1700-15000 | 1700-15500 | 4400-22600 | 5300-30000 | | | |
| | Power Input at 47 °F | Rated | W | 750 | 950 | 760 | 974 | 1426 | 2010 | | | |
| | Capacity at 17 °F | Rated | Btu/h | 10000 | 10600 | 10000 | 10600 | 15800 | 21600 | | | |
| | Capacity at 5 °F | Max | Btu/h | 9200 | 9200 | 9300 | 9300 | 14500 | 20800 | | | |
| | Capacity at -5 °F | Max | Btu/h | 6100 | 6300 | 6100 | 6300 | 10500 | 13200 | | | |
| Efficiency | SEER2 | | | 22 | 22 | 23 | 22 | 21.5 | 22 | | | |
| | HSPF2 | | | 9.5 | 9.5 | 9.5 | 9.5 | 9.5 | 10 | | | |
| | COP | W/W | | 3.79 | 3.79 | 3.85 | 3.7 | 3.7 | 3.5 | | | |
| | EER2 | Btu/h/W | | 13.0 | 11.4 | 13.0 | 11.8 | 11.5 | 12.0 | | | |
| | MCA | A | | 15 | 15 | 10 | 10 | 15 | 16 | | | |
| | MOCP | A | | 25 | 25 | 15 | 15 | 20 | 25 | | | |
| Indoor Unit | Air Flow Rate (SH/H/M/L/Q) | CFM | | 355/315/282/255/180 | 380/330/302/273/193 | 355/315/282/255/180 | 380/330/302/273/193 | 560/496/437/378/252 | 735/652/574/497/331 | | | |
| | Sound Pressure Level | Cooling | dB(A) | 41/36/34/31/26 | 43/40/36/33/27 | 41/36/34/31/26 | 43/40/36/33/27 | 49/45/41/37/29 | 50/48/44/39/33 | | | |
| | | Heating | dB(A) | 41/36/33/29/- | 43/40/36/33/- | 41/36/33/29/- | 43/40/36/33/- | 48/45/41/38/- | 49/47/43/38/- | | | |
| | External Static Pressure | In.W.G. | | 0 | 0 | 0 | 0 | 0 | 0 | | | |
| Outdoor Unit | Air Flow Rate (Cooling/Heating) | CFM | | 1170 | 1170 | 1170 | 1170 | 1650 | 2000 | | | |
| | Sound Pressure Level | Cooling | dB(A) | 51 | 52 | 51 | 52 | 53 | 58 | | | |
| Heating | | dB(A) | 51 | 52 | 51 | 52 | 55 | 58 | | | | |
| Piping | Diameter | Gas(O.D.) | In.[mm] | 3/8[9.52] | 3/8[9.52] | 3/8[9.52] | 3/8[9.52] | 1/2[12.7] | 5/8[15.88] | | | |
| | | Liquid(O.D) | In.[mm] | 1/4[6.35] | 1/4[6.35] | 1/4[6.35] | 1/4[6.35] | 1/4[6.35] | 1/4[6.35] | | | |
| | | Indoor Drain | In.[mm] | 5/8[15.88] | 5/8[15.88] | 5/8[15.88] | 5/8[15.88] | 5/8[15.88] | 5/8[15.88] | | | |
| | Max.Length | ft[m] | | 65 [20] | 65 [20] | 65 [20] | 65 [20] | 100 [30] | 100 [30] | | | |
| | Max.Height | ft[m] | | 50 [15] | 50 [15] | 50 [15] | 50 [15] | 65 [20] | 65 [20] | | | |
| Electrical | Outdoor-Indoor | V,ph,Hz | | 115,1,60 | 115,1,60 | 208/230,1,60 | 208/230,1,60 | 208/230,1,60 | 208/230,1,60 | | | |
| | Recommended Breaker Size | A | | 25 | 25 | 15 | 15 | 20 | 25 | | | |
| Refrigerant Type | | | | R32 | R32 | R32 | R32 | R32 | R32 | | | |
| Guaranteed Temperature Operation Range | Cooling | °F DB [°C DB] | | 5-125 (-15-52) | 5-125 (-15-52) | 5-125 (-15-52) | 5-125 (-15-52) | 5-125 (-15-52) | 5-125 (-15-52) | | | |
| | Heating | °F DB [°C DB] | | -13-75 (-25-24) | -13-75 (-25-24) | -13-75 (-25-24) | -13-75 (-25-24) | -13-75 (-25-24) | -13-75 (-25-24) | | | |

Remark:
 1.All specifications are subject to change by the manufacturer without prior notice
 2.All units are being tested and comply to ISO 5151
 3.Sound pressure levels are measured in anechoic chamber.During actual operation, sound pressure level will be higher as a result of room specification condition
 4.Data from AUX lab, 08/03/24, Data may change according to test surroundings, AUX reserves right of explanation on data



AUX CLOUD COMMERCE(USA) INC
 400 Corporate Ct, South Plainfield, NJ 07080

FEATURES

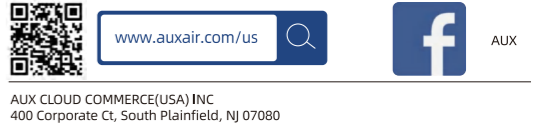


APPEARANCE



| SEER25 | | | | Specification Sheet | | | | | | | |
|--|---------------------------------|---------------|---------|---------------------|---------------------|---------------------|---------------------|---------------------|--------------------|--|--|
| | | | | CD | | | LC | | | | |
| | | | | 115V,1ph,60Hz | | | 208/230V,1ph,60Hz | | 208/230V,1ph,60Hz | | |
| Model | | | | AMAR09HP115V1C | AMAR12HP115V1C | AMAR09HP230V1C | AMAR12HP230V1C | AMAR18HP230V1C | AMAR24HP230V1C | | |
| Indoor Unit | | | | AMAR09HP115V1CH | AMAR12HP115V1CH | AMAR09HP230V1CH | AMAR12HP230V1CH | AMAR18HP230V1CH | AMAR24HP230V1CH | | |
| Outdoor Unit | | | | AMAR09HP115V1CO | AMAR12HP115V1CO | AMAR09HP230V1CO | AMAR12HP230V1CO | AMAR18HP230V1CO | AMAR24HP230V1CO | | |
| AHRI Certified Reference Number | | | | 214097919 | 214290018 | 214290015 | 214290021 | 214290022 | 214290024 | | |
| Cooling | Capacity | Rated | Btu/h | 9200 | 12000 | 9200 | 12000 | 18000 | 22500 | | |
| | Capacity Range | Min-Max | Btu/h | 1700-13000 | 1700-13400 | 1700-13000 | 1700-13400 | 2900-22000 | 4300-28500 | | |
| | Power Input | Rated | W | 657 | 1000 | 675 | 990 | 1286 | 1610 | | |
| | Moisture Removal | Kg/h | | 0.7 | 1 | 0.7 | 1 | 1.6 | 2.4 | | |
| Heating | Capacity at 47 °F | Rated | Btu/h | 10000 | 12300 | 10000 | 12300 | 18200 | 24000 | | |
| | Capacity Range | Min-Max | Btu/h | 1700-15700 | 1700-16000 | 1700-15700 | 1700-16000 | 4400-24500 | 5300-31000 | | |
| | Power Input at 47 °F | Rated | W | 750 | 900 | 750 | 936 | 1270 | 1750 | | |
| | Capacity at 17 °F | Rated | Btu/h | 11900 | 12400 | 11900 | 12400 | 17800 | 22400 | | |
| | Capacity at 5 °F | Max | Btu/h | 9400 | 9600 | 9500 | 9700 | 15500 | 21500 | | |
| | Capacity at -5 °F | Max | Btu/h | 7000 | 7200 | 7000 | 7200 | 12000 | 14300 | | |
| Efficiency | SEER2 | | | 25 | 25 | 25 | 25 | 25 | 25 | | |
| | HSPF2 | | | 10.5 | 10.5 | 10.5 | 10.5 | 10.5 | 10.5 | | |
| | COP | W/W | | 3.91 | 4.01 | 3.9 | 3.85 | 4.2 | 4 | | |
| | EER2 | Btu/h/W | | 14.0 | 12.0 | 13.6 | 12.1 | 14.0 | 14.0 | | |
| | MCA | A | | 20 | 20 | 9 | 9 | 15 | 15 | | |
| | MOCP | A | | 25 | 25 | 15 | 15 | 20 | 25 | | |
| Indoor Unit | Air Flow Rate (SH/H/M/L/Q) | CFM | | 355/315/282/255/180 | 380/330/302/273/193 | 355/315/282/255/180 | 380/330/302/273/193 | 735/652/574/497/331 | 940/833/742/636/- | | |
| | Sound Pressure Level | Cooling | dB(A) | 41/36/34/31/26 | 43/40/36/33/27 | 41/36/34/31/26 | 43/40/36/33/27 | 50/46/43/38/31 | 51/48/44/39/34 | | |
| | | Heating | dB(A) | 41/36/33/29/- | 43/40/36/33/- | 41/36/33/29/- | 43/40/36/33/- | 49/45/42/37/- | 50/48/43/39/- | | |
| | External Static Pressure | In.W.G. | | 0 | 0 | 0 | 0 | 0 | 0 | | |
| Outdoor Unit | Air Flow Rate (Cooling/Heating) | CFM | | 1650 | 1650 | 1650 | 1650 | 2000 | 2000 | | |
| | Sound Pressure Level | Cooling | dB(A) | 53 | 53 | 53 | 53 | 55 | 59 | | |
| Heating | | dB(A) | 53 | 53 | 53 | 53 | 57 | 59 | | | |
| Piping | Diameter | Gas(O.D.) | In.[mm] | 3/8[9.52] | 3/8[9.52] | 3/8[9.52] | 3/8[9.52] | 1/2[12.7] | 5/8[15.88] | | |
| | | Liquid(O.D) | In.[mm] | 1/4[6.35] | 1/4[6.35] | 1/4[6.35] | 1/4[6.35] | 1/4[6.35] | 1/4[6.35] | | |
| | | Indoor Drain | In.[mm] | 5/8[15.88] | 5/8[15.88] | 5/8[15.88] | 5/8[15.88] | 5/8[15.88] | 5/8[15.88] | | |
| | Max.Length | ft[m] | | 65 [20] | 65 [20] | 65 [20] | 65 [20] | 100 [30] | 100 [30] | | |
| | Max.Height | ft[m] | | 50 [15] | 50 [15] | 50 [15] | 50 [15] | 65 [20] | 65 [20] | | |
| Electrical | Outdoor-Indoor | V,ph,Hz | | 115,1,60 | 115,1,60 | 208/230,1,60 | 208/230,1,60 | 208/230,1,60 | 208/230,1,60 | | |
| | Recommended Breaker Size | A | | 25 | 25 | 15 | 15 | 20 | 25 | | |
| Refrigerant Type | | | | R32 | R32 | R32 | R32 | R32 | R32 | | |
| Guaranteed Temperature Operation Range | Cooling | °F DB [°C DB] | | 5-125 (-15-52) | 5-125 (-15-52) | 5-125 (-15-52) | 5-125 (-15-52) | 5-125 (-15-52) | 5-125 (-15-52) | | |
| | Heating | °F DB [°C DB] | | -13-75 (-25-24) | -13-75 (-25-24) | -13-75 (-25-24) | -13-75 (-25-24) | -13-75 (-25-24) | -13-75 (-25-24) | | |

Remark:
 1.All specifications are subject to change by the manufacturer without prior notice
 2.All units are being tested and comply to ISO 5151
 3.Sound pressure levels are measured in anechoic chamber.During actual operation, sound pressure level will be higher as a result of room specification condition
 4.Data from AUX lab, 08/03/24, Data may change according to test surroundings, AUX reserves right of explanation on data



AUX CLOUD COMMERCE(USA) INC
 400 Corporate Ct, South Plainfield, NJ 07080